

# 1 Installation and Uninstallation

## 1.1 Upgrading the SigFit Applications

To upgrade SigFit from any SigFit version, simply follow the installation instructions in Section 1.3. The installer will automatically detect and optionally uninstall prior installations of SigFit.

## 1.2 Installation Requirements

Installation of SigFit requires Administrator permissions.

SigFit is currently available only for the following platforms:

Microsoft Windows 32-bit NT/2000/XP Intel x86\_32

Microsoft Windows 64-bit XP Intel x86\_64

SigFit help files accessible from VSigFit or by the shortcuts in the Start menu require Adobe Reader.

The following files may be required to run VSigFit and should be part of the Microsoft Windows installation. The SigFit installation currently does not check for the existence of these files. If they are found to be missing while executing the software, a popup error will result referencing the required file. The user should search for downloads and support of these files at [www.microsoft.com](http://www.microsoft.com).

ole32.dll - %SystemRoot%\system32\ole32.dll  
VERSION.dll - %SystemRoot%\system32\VERSION.dll  
MFC42.DLL - %SystemRoot%\system32\MFC42.DLL  
COMCTL32.dll - %SystemRoot%\system32\COMCTL32.dll  
ADVAPI32.dll - %SystemRoot%\system32\ADVAPI32.dll  
WINSPOOL.DRV - %SystemRoot%\system32\WINSPOOL.DRV  
MSVCRT.dll - %SystemRoot%\system32\MSVCRT.dll  
USER32.dll - %SystemRoot%\system32\USER32.dll  
WSOCK32.dll - %SystemRoot%\system32\WSOCK32.dll  
OLEAUT32.dll - %SystemRoot%\system32\OLEAUT32.dll  
WINMM.dll - %SystemRoot%\system32\WINMM.dll  
RPCRT4.dll - %SystemRoot%\system32\RPCRT4.dll  
comdlg32.dll - %SystemRoot%\system32\comdlg32.dll  
SHELL32.dll - %SystemRoot%\system32\SHELL32.dll  
GDI32.dll - %SystemRoot%\system32\GDI32.dll  
MSVCRT.dll - %SystemRoot%\system32\MSVCRT.dll  
KERNEL32.dll - %SystemRoot%\system32\KERNEL32.dll

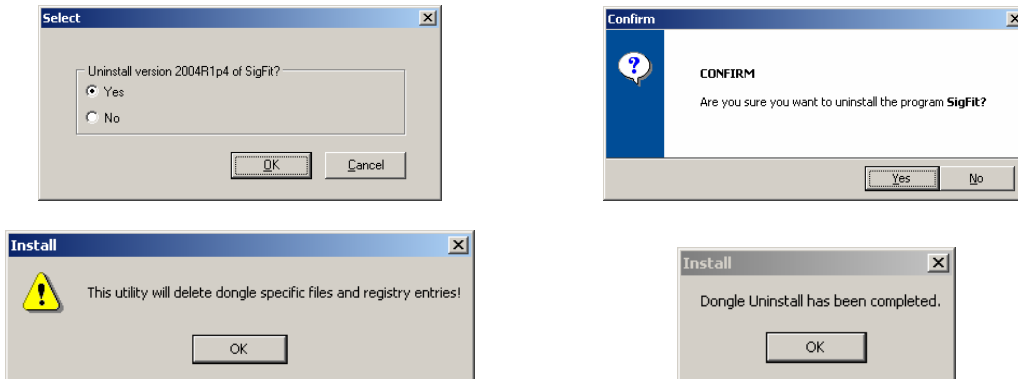
## 1.3 Installation of the SigFit Application

**WARNING:** Installation of this software indicates your acceptance of the license agreement supplied with the software.

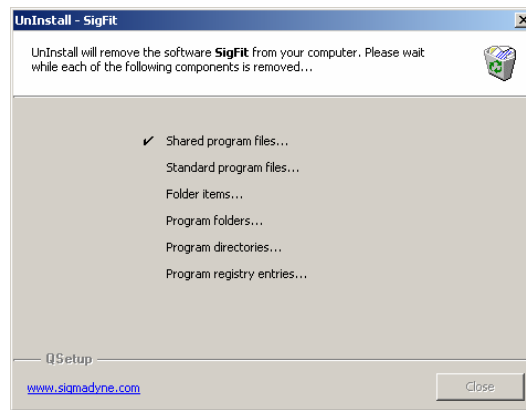
The following steps will install SigFit and Visual SigFit as well as setting the appropriate environment variables. These steps must be performed on any machine on which the SigFit applications will be executed. Download SigFit2008R1\_x86\_32.exe or SigFit2008R1\_x86\_64.exe from the Sigmadyne website using the username and password provided by Sigmadyne. To begin, double-click SigFit2008R1\_x86\_32.exe or SigFit2008R1\_x86\_64.exe and follow the instructions.

**IMPORTANT:** During the install process, some popup dialogs requiring a response may become hidden behind the main dialog window. If the install appears to be hung, simply move the displayed window(s) around to see if a dialog is present requiring a response. It is very common for the final dialog of the uninstallation of prior security device drivers to be displayed behind Uninstall – SigFit dialog.

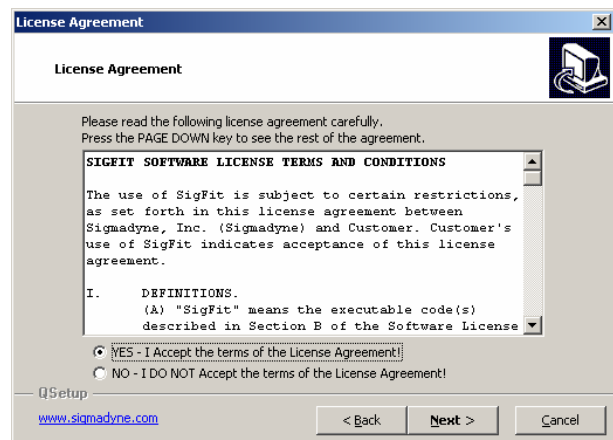
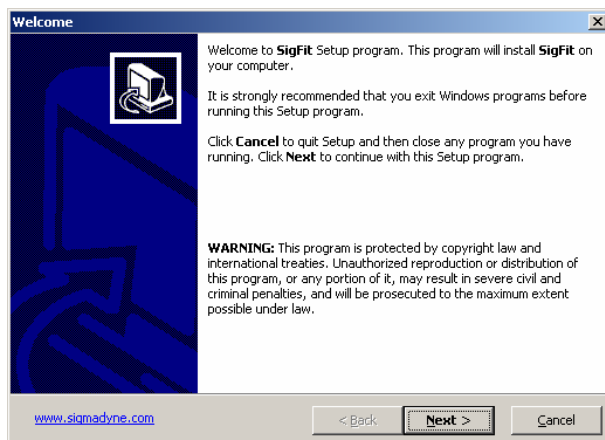
A check for an existing installation is made. If a prior version is found, the user may request the installer to uninstall it. If a prior version is left uninstalled, then the user may need to adjust the contents of the PATH environment variable so that the executables of the version being installed will be found instead of those of an earlier version.



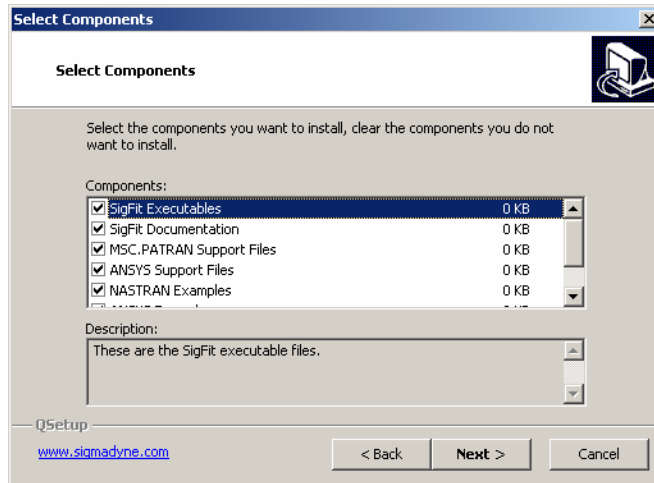
This dialog commonly gets displayed behind the one below causing the install to appear to be hung. Simply move the larger UnInstall-SigFit dialog if the install appears to be hung.



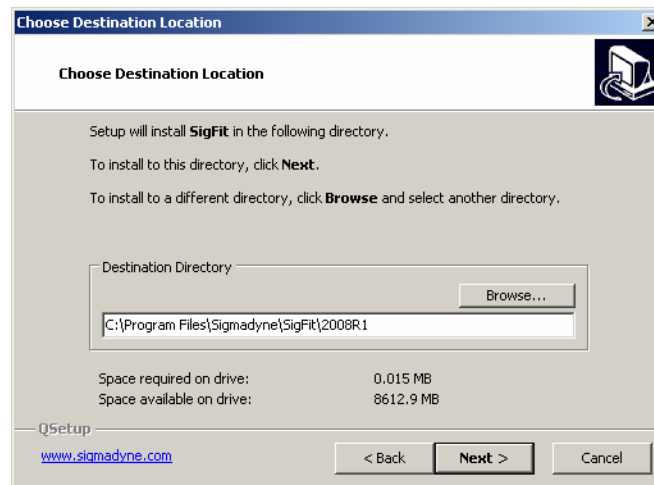
Once any detected prior installations have been removed, a Welcome banner will appear. Close any programs you may have running and pick Next. Read the License Agreement and indicate your acceptance by picking the radio button next to "YES" and pick Next.



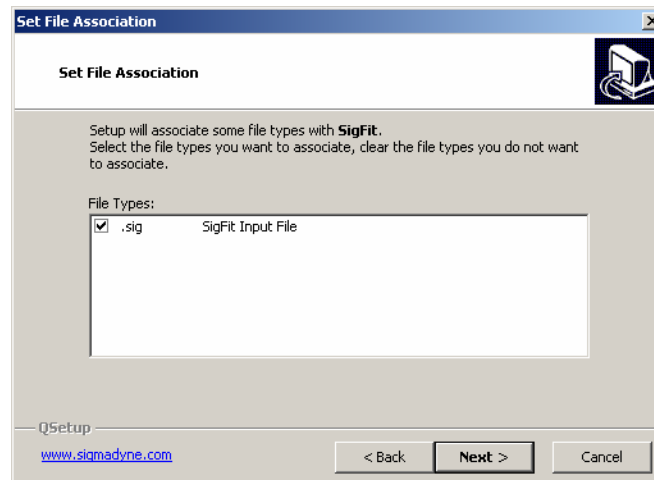
The Select Components dialogue as shown below can be used to choose which files to install. Select the files groups you wish to install and pick Next. The default installation is to install all files and is recommended.



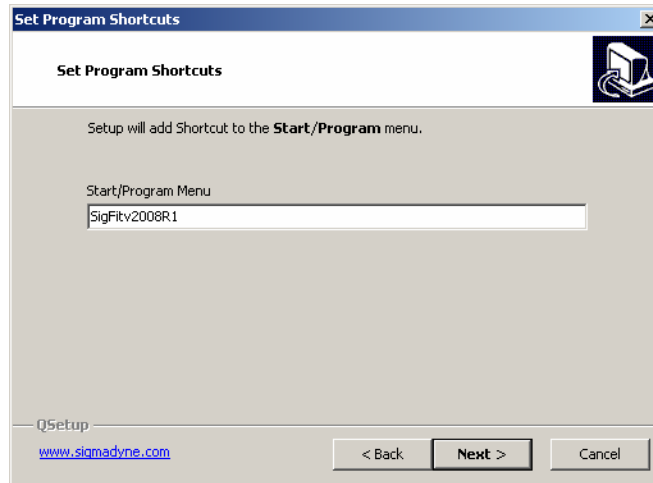
Use the default installation directory or modify it and pick Next.



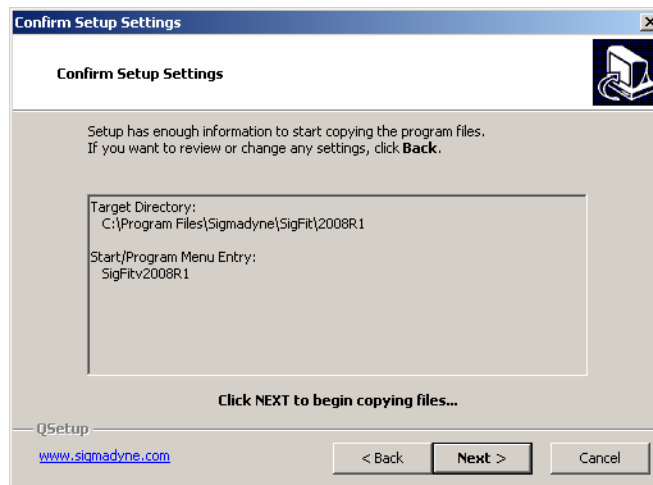
Choose if you would like .sig files associated with SigFit.



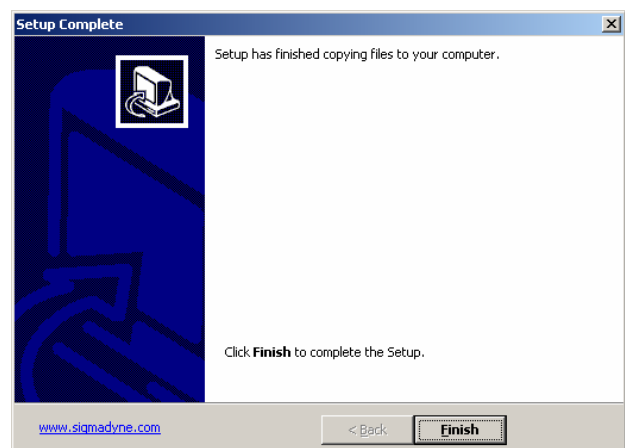
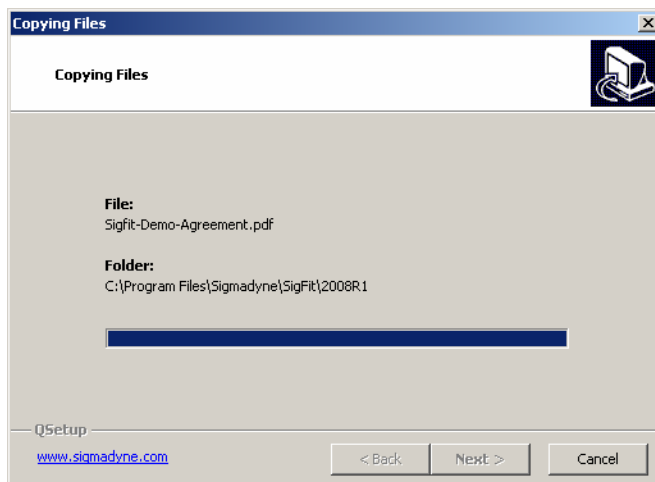
Use the default program folder name or modify it and pick Next.



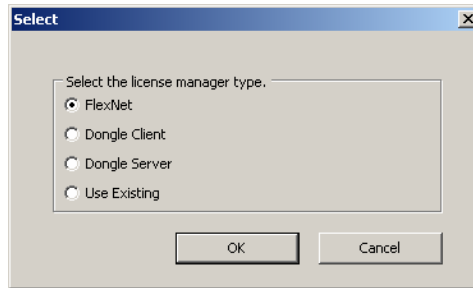
Verify the installation settings and pick Next.



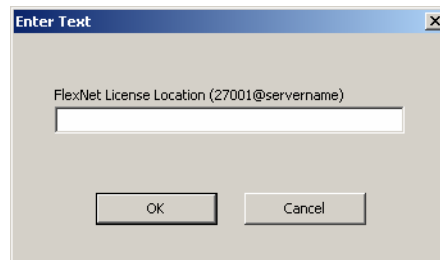
The selected files will copy to the installation directory. When the copy is complete pick Finish.



Once the files are copied a choice will be given to select the type of licensing system SigFit should expect to use.



If the FLEXnet licensing system is chosen then the location of the FLEXnet license will be required. This location is given in the form of *port\_number@servername*. The port number may be chosen by the user but must be consistent with that used in the FLEXnet license file. Be sure that the port number chosen does not conflict with any other ports being used on your system.



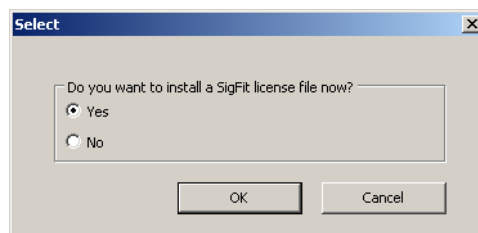
At this point the installation of the SigFit application is complete and the installation will close.

#### 1.4 Installation of Sigmadyne FLEXnet Licensing

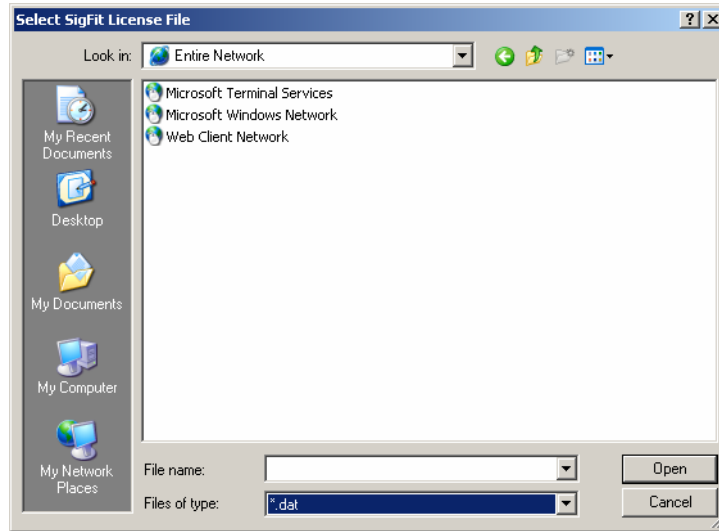
**WARNING:** It has been found that x86\_32 platforms can have trouble obtaining licenses from x86\_64 platform FLEXnet license servers. If you would like to use SigFit on any x86\_32 platforms be sure to install your FLEXnet server on a x86\_32 platform.

Sigmadyne FLEXnet licensing is installed on the license server only by double-clicking SigmadyneFNPLicensingv11.4.1\_x86\_32.exe or SigmadyneFNPLicensingv11.4.1\_x86\_64.exe. If you have a license certificate file for a specific license server machine, then be sure to install the license server software on that machine. No licensing software is required on client SigFit installations for Sigmadyne FLEXnet licensing.

Follow the instructions of the installation dialogs. You will be given a choice to install a license file.



If you answer yes, then you will be prompted to pick a license file which will be installed and used to start the FLEXnet service named Sigmadyne License Manager.



This will complete installation of the FLEXnet licensing software. To further configure the FLEXnet license manager use the lmtools utility found in Start/SigmadyneFNPLicensingv11.4.1.

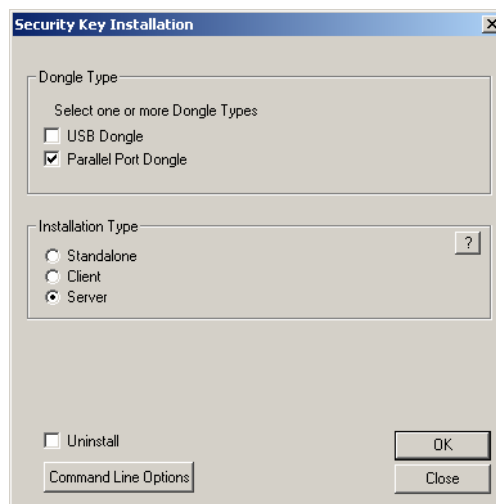
### 1.5 Installation of Dongle Security Drivers

**WARNING:** The dongle licensing system does not run on x86\_64 platforms. Only FLEXnet licensing runs on x86\_64 platforms.

Installation of the dongle security device drivers is performed by double-clicking DongleSecurityInstall.exe file.

#### Parallel Server

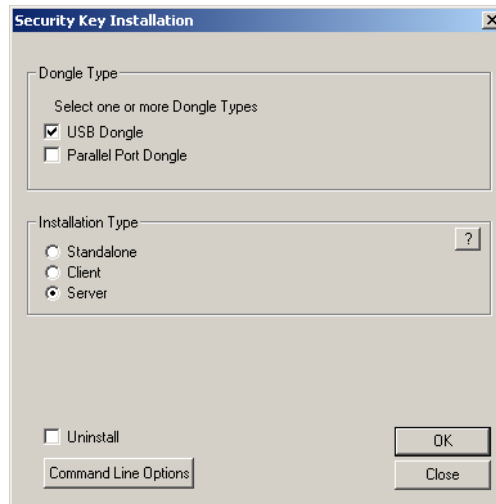
To install the drivers for a dongle license server with a parallel port dongle use the settings shown below and pick OK.



#### USB Server

**WARNING:** USB is not supported on Windows NT and Windows 95. For these systems you must use a parallel port server or client install.

To install the drivers for a dongle license server with a USB dongle use the settings shown below and pick OK.



At this time you may plug in your USB device. You will see dialogs indicating that your operating system recognizes the device and its installed driver. However, Windows 2000 and Windows XP respond differently.

#### Windows 2000

The dialogues indicating that the device has been found may open and close so fast that you may not see what they all say. You should not have to click on any of the windows. You may verify that the device is installed by opening the System icon in the Control Panel and selecting the Hardware tab. Then select Device Manager. USB Dongle – Software Protection Device should be listed under USB.

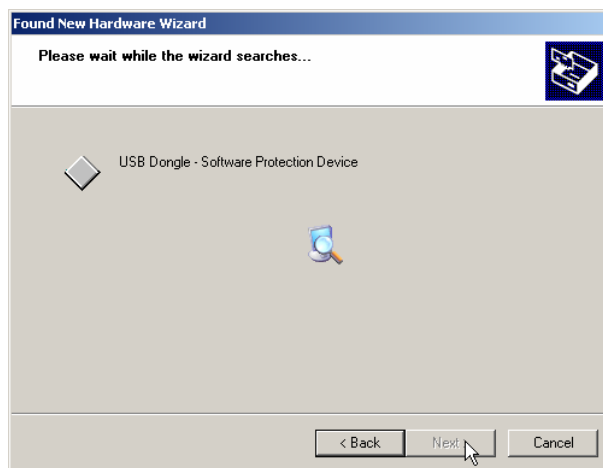


## Windows XP

When you plug in the USB device a few messages appear on the lower task bar and then the following dialogue will appear. Be sure "Install the software automatically" is selected and pick Next.



The following dialogue will appear briefly ....



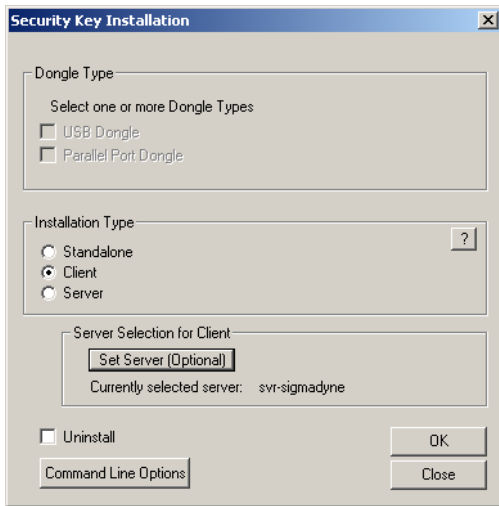
... and will be followed by the following dialogue. Pick Finish.



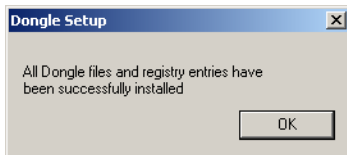
## Client

A client install is performed on any machine which obtains the license to run SigFit by checking for the security device located on a server machine via a local area network. The driver's TCP/IP protocol allows flexible sharing of the license. However, your license agreement defines the limit of the area over which your license may be shared. If you are unsure of the contents of this agreement for your site license or who in your organization has a copy, please contact Sigmadyne.

To install the drivers for a client SigFit installation use the settings shown below and pick OK. Do not use the Set Server feature.



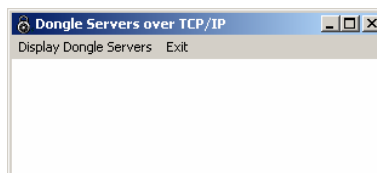
Installation of the security device drivers will commence and will take a few seconds.



After the above dialog is dismissed open in a text editor such as notepad the file in C:\WINDOWS\system32 called TCPIPSvr.dat. Enter the IP address of the dongle license server and save the file.

**IMPORTANT:** If a firewall is present between the execution of SigFit and the security device, then the applications *DongleServers.exe* and *KLServer.exe* must be added to the approved programs list on port 4242. Be sure to consider software firewalls resident on either the client or server machines in addition to other firewalls along the network path between the machines.

Access to the server license may be tested with a utility which can be run from any command window or from the Run feature in the Start menu. Simply type *DongleServers* and pick OK. The following utility will open allowing the user to pick *Display Dongle Servers*. This will show a list of the license servers found by TCP/IP. Note that server machines using the old NetBIOS protocols (pre-v2004R1.4) will not show up here.



## **1.6 Uninstallation of the SigFit Application and Security Drivers**

Version 2008 R1 of SigFit may be uninstalled by the remove program feature in the Control Panel.

1. Double-click the Control Panel in My Computer.
2. Double-click the Add/Remove Programs icon.
3. Pick SigFit from the list and then pick Remove.
4. Pick Close after the uninstallation is complete.